

2 Around Town

Lesson 1 Places to Go

A Match.

1. movie theater f

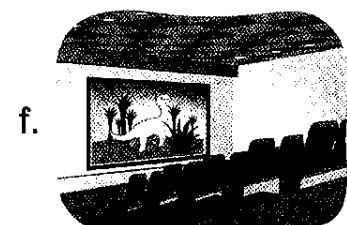
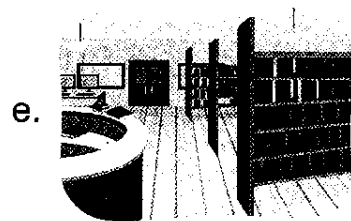
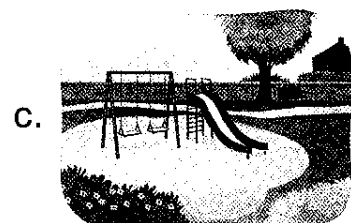
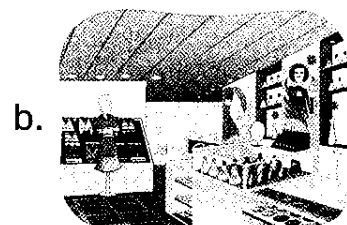
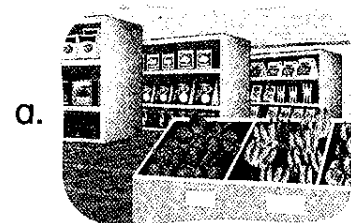
2. post office d

3. library e

4. supermarket a

5. department store b

6. park c



B Unscramble.

1. department store 2. library

edrtnpmaet rtsoe

biarlry

3. movie theater 4. post office

ovemi hattere

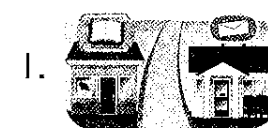
sotp efoifc

5. supermarket 6. park

tesaeurrpmk

kpar

C Circle.



Where's the post office?

It's across from the library.

It's across from the park.

2. Where's the park?

It's across from the department store.

It's across from the supermarket.



Where's the department store?

It's across from the movie theater.

It's across from the post office.

D Write.



Where's the department store?

It's between the park and the supermarket.



Where's the movie theater?

It's between the post office and the library.



Where's the post office?

It's between the supermarket and the movie theater.

E Read and match.

1. The department store is across from the supermarket.

2. The library is between the park and the post office.

3. The park is across from the movie theater.

